



BRIGADE
RESIDENCES
at **WORLD TRADE CENTER**
Perungudi, Chennai



There will
only be **ONE.**



Everyone craves exclusivity.
But would it still be exclusive if everyone
could have it?



Artist's impression



**BRIGADE
RESIDENCES**
at **WORLD TRADE CENTER**
Perungudi, OMR



Welcome to Brigade Residences at World Trade Center, ultra-luxury homes that are a part of the same integrated development as World Trade Center, Chennai, the city's tallest commercial space. As with every World Trade Center, there can be only one in a city.

These podium-level 3-bedroom homes and 4-bedroom penthouses, spread over two 26 storey towers, are the epitome of exclusivity. Along with the delightfully appointed clubhouse and the many amenities, these homes offer that perfect mix of privacy and community, classic elegance and contemporary design, leisure and access to work, convenience and luxury, that one always dreamed of, but never thought possible.

All in all, for those with a discerning eye like yours, it is just the place to live, work and play.



An iconic development,
from a name that is no less iconic.

One of India's leading property developers, Brigade Group takes pride in a legacy over three decades long. A legacy of building the trust of stakeholders through unwavering commitment and consistent effort. Instituted in 1986, Brigade Group has transformed cityscapes across Bengaluru, Mysuru, Mangaluru, Hyderabad, GIFT City - Ahmedabad, Chennai and Kochi, with landmark residential, commercial, retail and hospitality addresses, and schools.

Today Brigade is shorthand for best-in-class design and top-of-the-line facilities in elegant, sophisticated, thoughtful creations. Spanning villas, villaments, penthouses, premium residences, luxury apartments, value homes, independent living for seniors and mixed-use lifestyle townships, Brigade Group's residential portfolio is impressive.

Over the years, many Brigade projects have been the first of their kind. The Group has to its name Brigade Gateway - one of India's most appreciated integrated enclaves. It is the license owner of 5 World Trade Centers across South India, and the developer of Bengaluru's tallest commercial building – World Trade Center.

Building positive experiences since 1986

Towards Greater Heights

- Launch of Holiday Inn Chennai.
- Launch of Brigade Xanadu Spanish themed township project in Chennai.

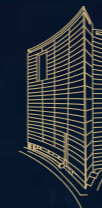


2017



- PE Funding of ₹1,500 Cr by GIC Singapore.
- Announcement of development of 10 Holiday Inn Express Hotels across South India.

2012



WTC Bengaluru

South India's tallest commercial building with 32 floors.

2010



Brigade Gateway

A one-of-a-kind mixed-use enclave with 1,250+ apartments.

2006



Leading the Way

- Brigade Software Park - Karnataka's 1st infrastructure project by a private developer.
- Brigade Enterprises becomes a Private Limited Company.

1998



Brigade Towers

Bengaluru's tallest building by a private developer.

1986

2019



Towards New Horizons

- Launch of Brigade Residences at WTC, Chennai.
- Launch of Integrated townships - Brigade Cornerstone Utopia and Brigade El Dorado in Bengaluru.
- Launch of 'Buzzworks' in co-working segment with plan of 2500+ seats across cities.
- Recognized as a 'Great Place To Work' 9 years in a row.

2014



Rising Higher

- Launch of World Trade Center, Kochi.
- Launch of REAP, India's 1st Real Estate Accelerator Programme.

2011



Building More Value

- Launch of Sheraton Grand Bangalore Hotel at Brigade Gateway.
- Launch of Integrated townships - Brigade Meadows and Brigade Orchards in Bengaluru.

2007



Brigade Goes Public

Brigade achieves a successful IPO.

2002



Brigade Millennium

- Bengaluru's 1st mixed-use enclave.
- Introduced concept of self-managed clubhouse to Bengaluru.

1995



Brigade MM

Bengaluru's 1st multi-storeyed industrial complex.



An introduction to
that which needs none.

The World Trade Center Association is an apolitical organization that serves as an international ecosystem of global connections, iconic properties, and integrated trade services under the umbrella of a prestigious brand.

Starting from the widely recognized one in Lower Manhattan, New York, today there are World Trade Centers in over 90 countries, each created to and adhering to the best global standards prescribed and audited by the Association.

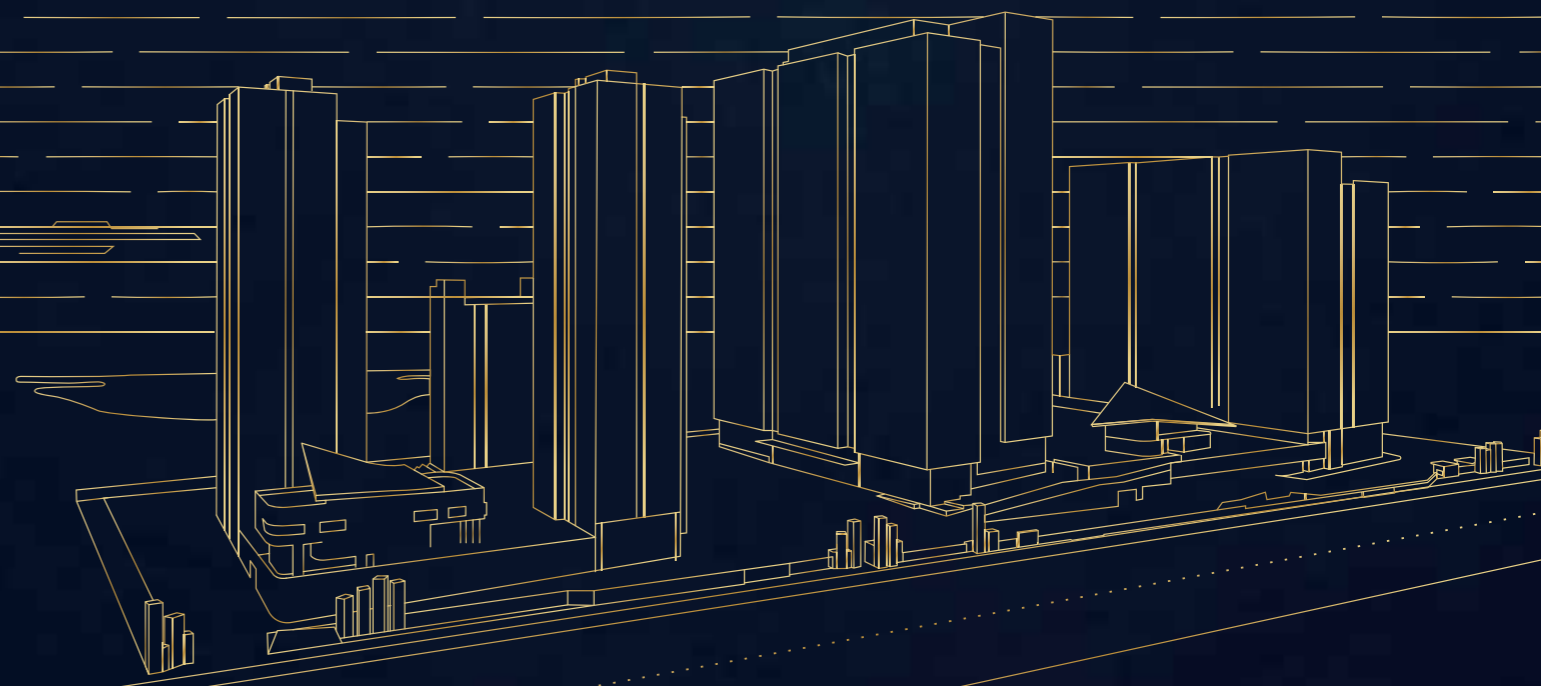
But here's the clincher. Each city can only ever have one World Trade Center, essentially meaning that a home at Brigade Residences at World Trade Center, Chennai, will be unique and exclusive forever.

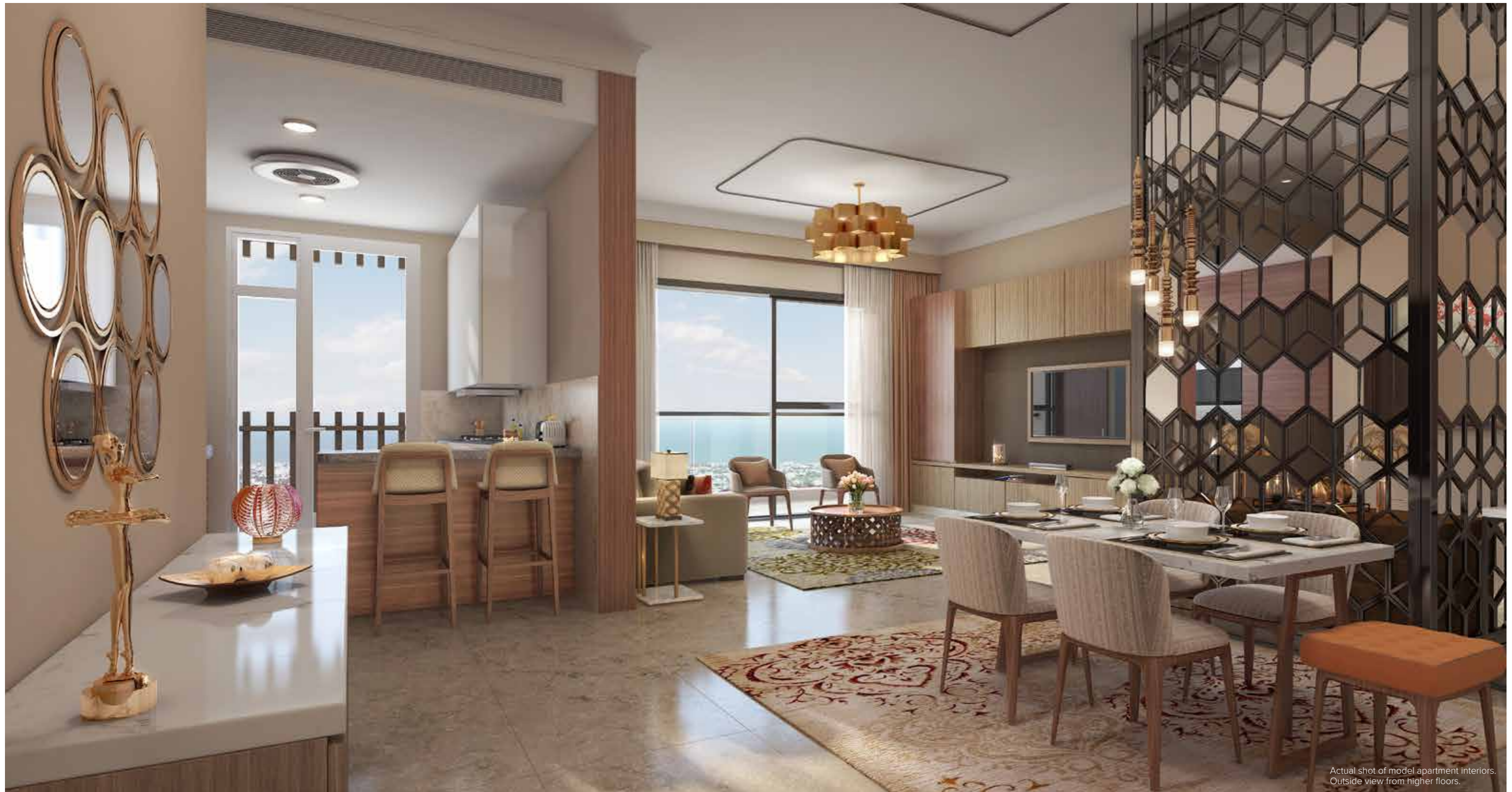


A match made in realty heaven

Brigade Residences at World Trade Center, Chennai, is no less than a coming together of legends. Brigade Group, one of India's leading developers, and the globally acclaimed World Trade Center.

This iconic development in Chennai, is an integrated enclave with residential, commercial and hospitality spaces. Each is set to the highest international standards, and will change the way the city lives and works, forever.





Actual shot of model apartment interiors. Outside view from higher floors.

Not just **exclusive.**
Exquisite too.

It's all very well to create something unique, but when it's your home we are speaking of, wouldn't you rather it be exquisite too?

Right from the word go, the raison d'être of Brigade Residences at World Trade Center has been to offer a home that is not just inimitable, but also impeccable.

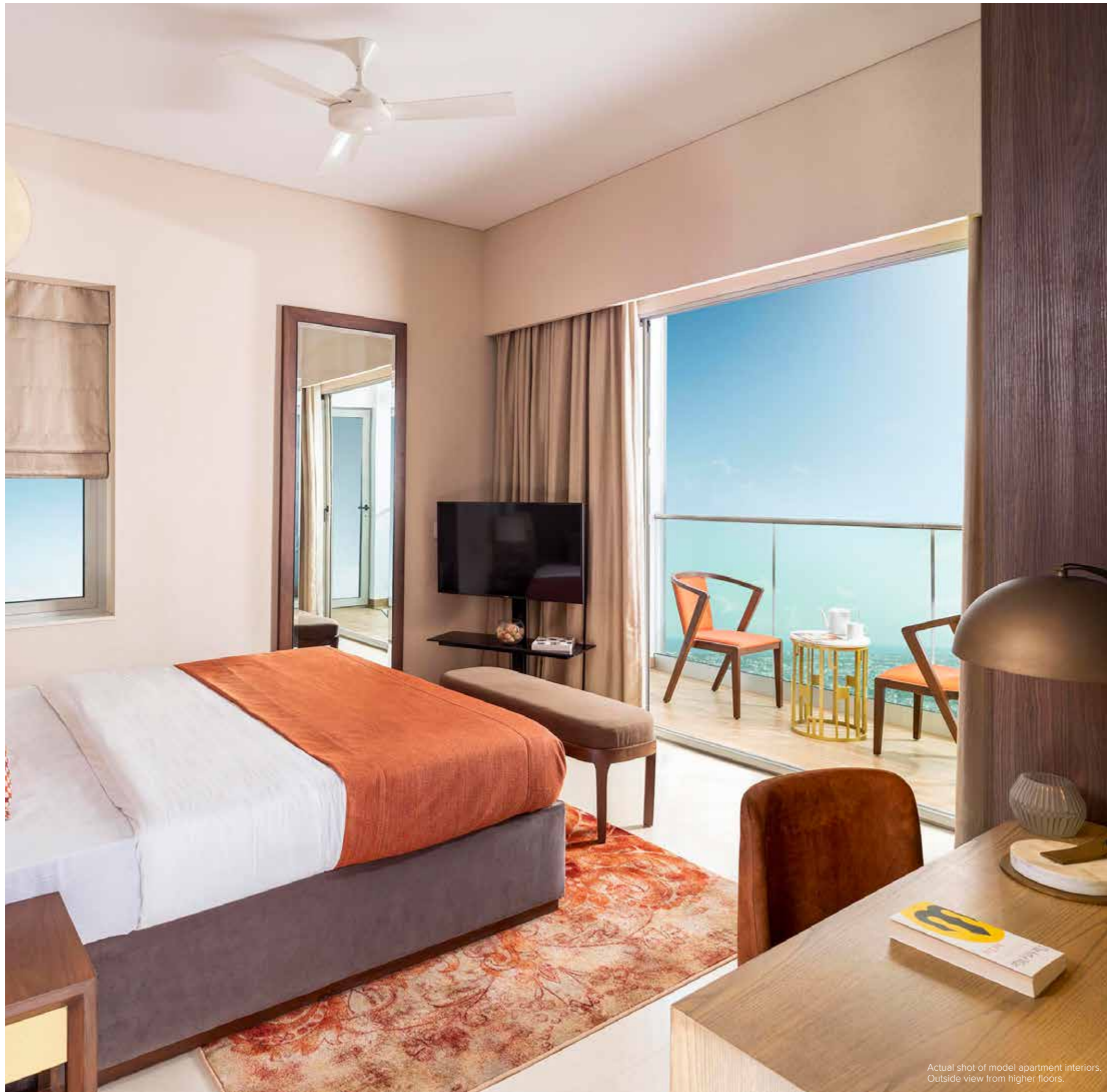
Two residential towers each 26 storeys high.

The stunningly designed Brigade Residences Clubhouse.

Magnificent 3-bedroom homes and 4-bedroom penthouses.

Executive apartments*, with a rooftop pool, bar, and top-notch F&B.

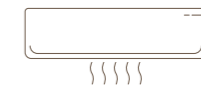
*In discussion with Marriott.



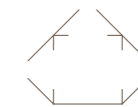
The view is
gloriously unfettered.
Not unlike
your dreams.

True luxury can expand one's horizons. Have you seen the view from our 3 and 4 bedroom luxury homes? In a word, transcendental. Miles and miles of open ocean. Or you could be looking out on the Perungudi Lake, apart from taking in stunning views of the cityscape.

And if you can tear your eyes away from these breathtaking views, you will notice how thoughtfully designed these exquisite homes are.



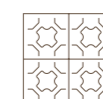
Fully air-conditioned apartments.



Homes with three sides open.

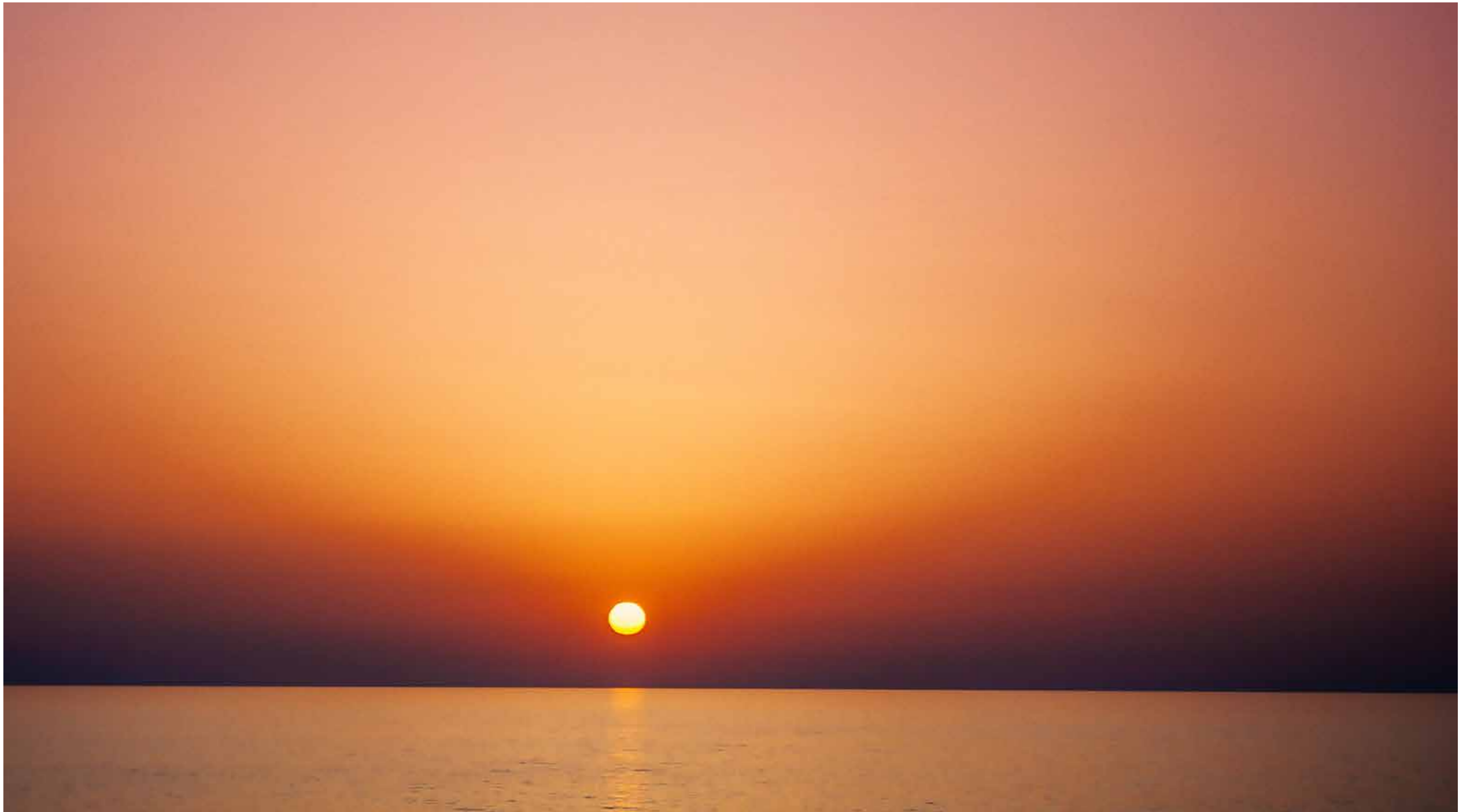


Stylish and ergonomic open kitchens.



High quality finishes.

Actual shot of model apartment interiors.
Outside view from higher floors.



Proof that life at the top comes with
breathtaking views.

All luxury homes on the higher floors on the Eastern flank, look out on exquisite and unhindered views of the sea.





Views of a pristine lake or of the stunning cityscape? Fortunately, you don't have to choose.

On the West flank, you can wake up to views of the Perungudi Lake, and at night, watch the lights of the sweeping cityscape. Why choose when you can have both?

They say
it's lonely at the top.
We'll make sure
you're not.

Let's face it. Higher the altitude, the colder it gets. But life at the top, at Brigade Residences at World Trade Center has been designed to be anything but lacking in warmth.

To start with, there's the Clubhouse, packed with all the trappings of the good life. Perfect for bringing people together, and tastefully appointed.

The covered swimming pool is tucked discretely under the clubhouse - for privacy, and for pleasant summer dips. For those with a penchant for sports, there's the tennis court, and the cricket practice pitch.

The executive apartments* with an exclusive rooftop swimming pool, a bar and a restaurant, is just right for entertaining friends and guests.

*In discussion with Marriott.



Clubhouse amenities



Swimming pool, with kids' pool and jacuzzi



Gym



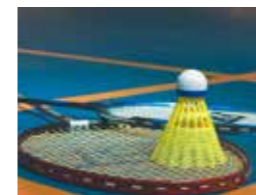
Media room



Party terrace



Banquet hall



Badminton and other indoor games



Billiards room



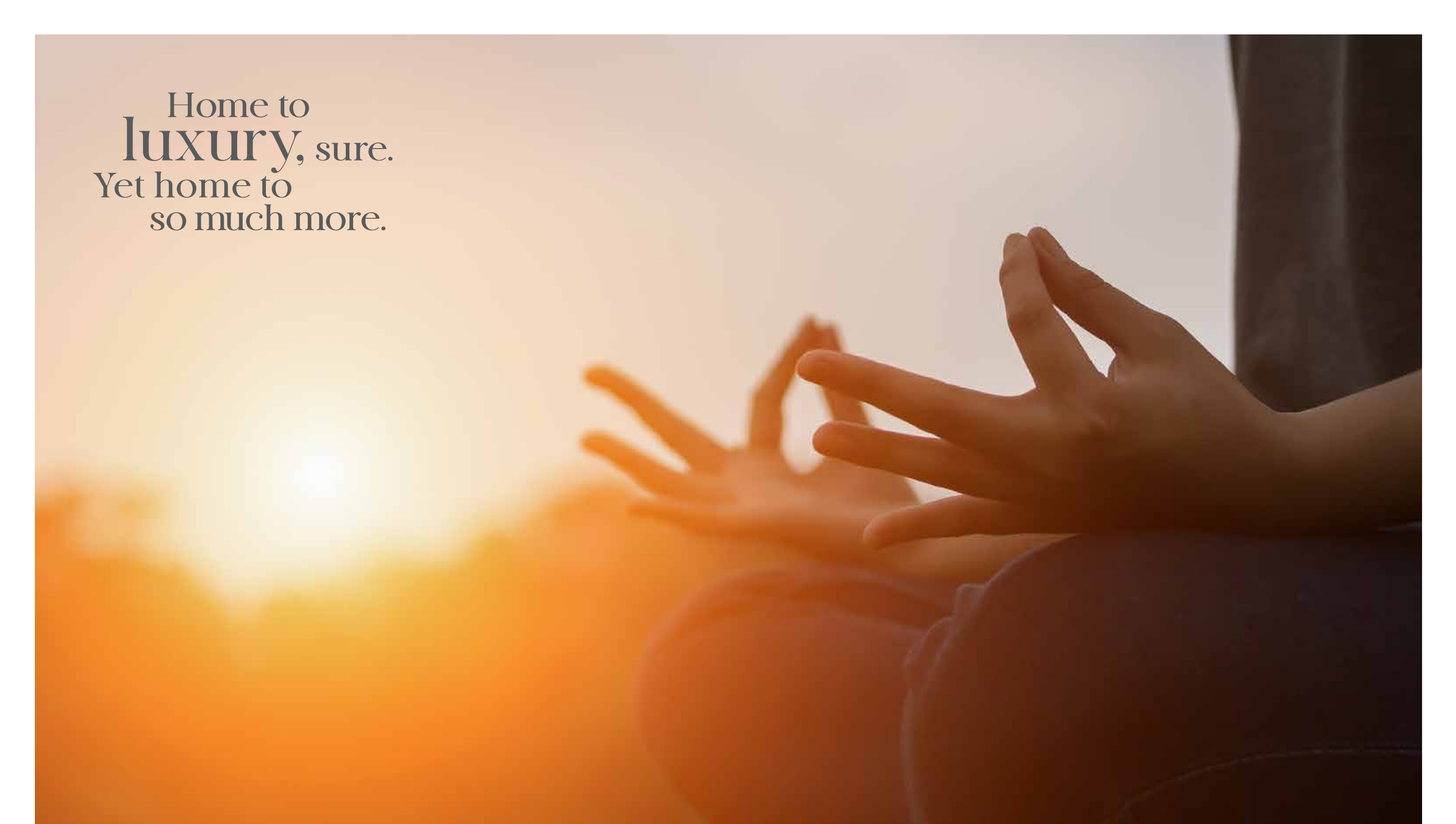
Tennis court



Children's play area



Cricket pitch



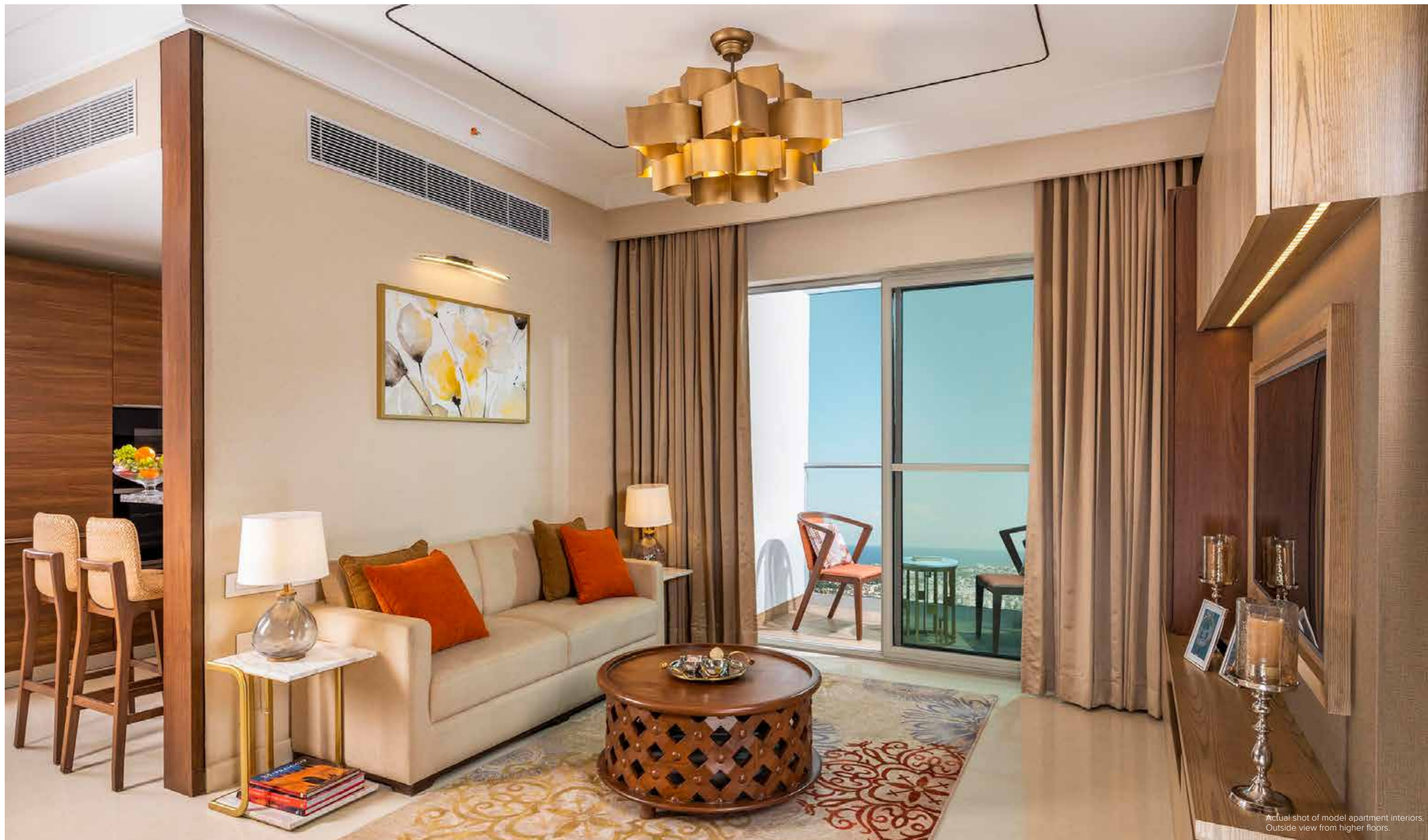
Home to
luxury, sure.
Yet home to
so much more.

Remember the homes we would draw as children? All, to the last one, were surrounded by space and nature – there were trees, waterbodies, greenery, views of hills and seas.

These pictures came not from any learning but from our instincts as social beings - that need nature for a healthful existence. It is this instinctive approach that we have adopted in designing every part of this property.

Here are just some of the unique features that offer the perfect blend of solitude in nature, and the joy of warm human interactions.

- A tree court with a pavilion and a reflective waterbody – an oasis of calm.
- A contemporary sculpture as a focal point of the executive apartments.
- A paved deck that doubles as a stage for intimate parties and celebrations.
- A sunken deck nestled in a grove of trees, creates that perfect spot for conversations.
- A contemplation deck close to the clubhouse – just right for yoga and workouts.



Actual shot of model apartment interiors.
Outside view from higher floors.

Crafted by
the best in
the world.

To create the new gold standard for living spaces in Chennai, we have collaborated with HoK, New York – internationally renowned in design, architecture, engineering and planning.

When you step into Brigade Residences at World Trade Center, you will be awed by the spectacular design and sweeping architectural grandeur.

Starting with the majestic twin towers – with earthy terracotta detailing – a hat tip to the beauty of traditional local architecture – that only enhances the imposing vertical rise of the structure.

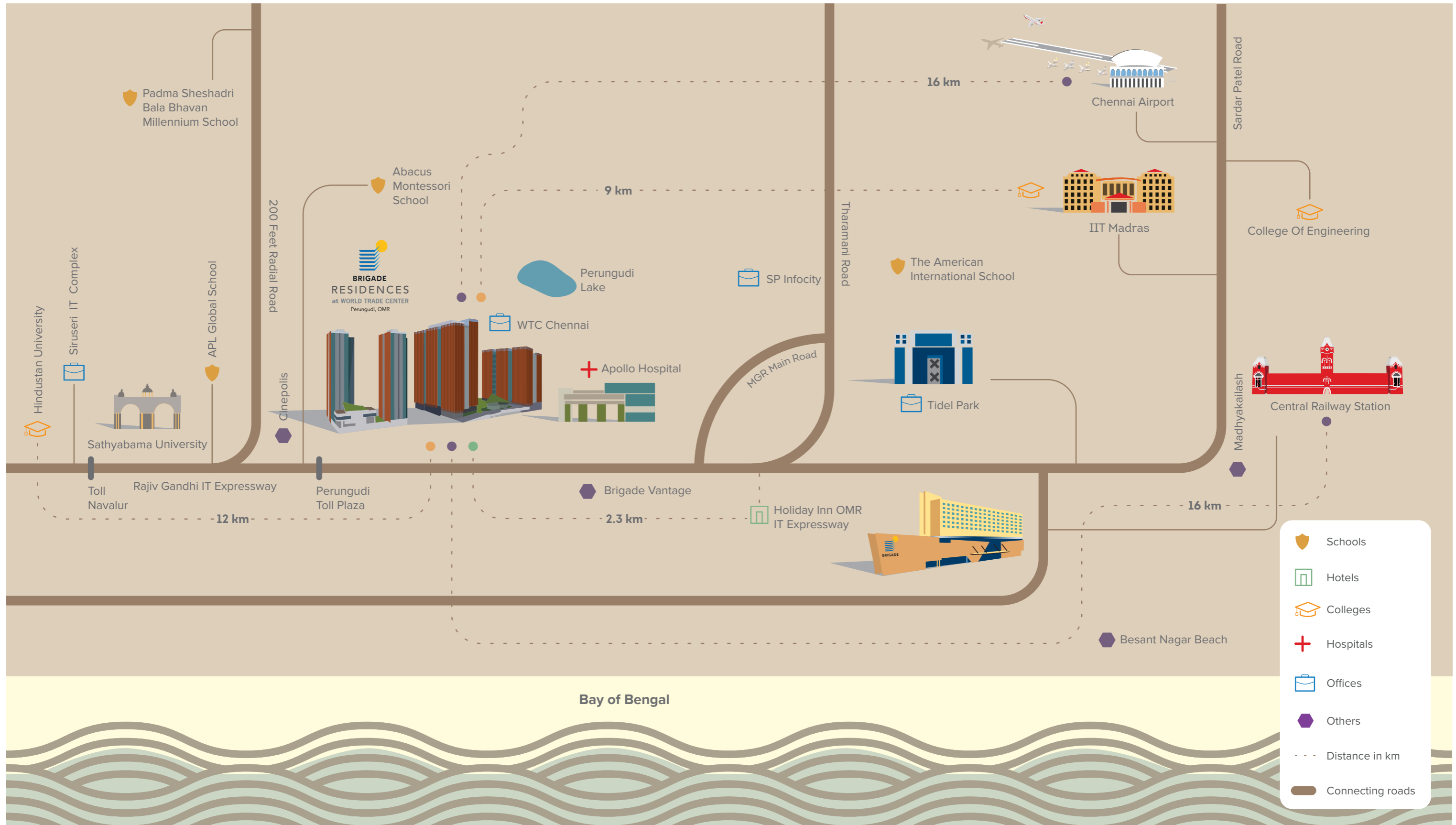
The entrance lobby with its double height ceiling is no less magnificent.

As you move further in, you'll discover the breathtaking vantage views of the sea, Perungudi Lake and the cityscape, that the peripheral units open out to, thanks to the strategic wing design of the edifice.

And now, exclusivity has an address.

Brigade Residences at World Trade Center is situated in the heart of Old Mahabalipuram Road, in Perungudi before the first toll plaza.

After all, a luxury international lifestyle – where you walk to work, live a wholesome life of ease, enjoy the best of retail, leisure and entertainment – simply must be where all the action is.



- Located in the heart of IT corridor
- On prime stretch of OMR, before the Perungudi Toll Plaza

- 35 minutes from Chennai International Airport
- Easy access to the best business and leisure hubs of Chennai

- Exceptional connectivity to offices, educational institutions, entertainment, conveniences

- Opposite proposed metro line
- A mere 5 minute walk to a multi-specialty hospital



Artistic Representation

The grand design for a life of luxury.

- | | | |
|---------------------------|----------------------------------------|-------------------|
| 1. Main entry | 9. Rear entry/exit | 16. Swimming pool |
| 2. Main exit | 10. Visitor's parking | 17. Kids' pool |
| 3. Parking entry/exit | 11. Walkway | 18. Jacuzzi |
| 4. Cab drop off | 12. Sculpture court | 19. Tree court |
| 5. Tower drop off | 13. Central court with still waterbody | 20. Sunken court |
| 6. Children's play area | 14. Pavilion | |
| 7. Cricket practice pitch | 15. Contemplation court | |
| 8. Tennis court | | |
- - - Open space
- - - recreation park

The information depicted in this booklet viz., master plans, floor plans, furniture layout, fittings, illustrations, specifications, designs, dimensions, rendered views, colours, amenities and facilities etc., are subject to change without notifications as may be required by the relevant authorities or the developer's architect, and cannot form part of an offer or contract. Whilst every care is taken in providing this information, the Developer cannot be held liable for variations. All illustrations and pictures are artist's impression or stock images used for representative purpose only. The information is subject to variations, additions, deletions, substitutions and modifications as may be recommended by the company's architect and/or the relevant approving authorities. The Developer is wholly exempt from any liability on account of any claim in this regard. (1 square metre = 10.764 square feet). E & OE. All dimensions and calculations are done in metric system (M/ Sq.m), and imperial system (Ft/ Sq.ft) shown is for reference only.

TNRERA Registration No. TN/01/Building/0174/2019 Available at <https://www.tnrera.in>



TYPICAL FLOOR PLAN

Type	SBA (sq.mt.)	SBA (sq.ft.)	Carpet area (sq.mt.)	Carpet area (sq.ft.)	Balcony area (sq.mt.)	Balcony area (sq.ft.)
1 & 2	169.11	1820	104.85	1129	10.06	108
3 & 4	179.75	1935	108.96	1173	14.87	160
5	179.32	1930	108.54	1168	14.87	160
6	166.61	1793	104.17	1121	10.41	112

The information depicted in this booklet viz., master plans, floor plans, furniture layout, fittings, illustrations, specifications, designs, dimensions, rendered views, colours, amenities and facilities etc., are subject to change without notifications as may be required by the relevant authorities or the developer's architect, and cannot form part of an offer or contract. Whilst every care is taken in providing this information, the Developer cannot be held liable for variations. All illustrations and pictures are artist's impression or stock images used for representative purpose only. The information is subject to variations, additions, deletions, substitutions and modifications as may be recommended by the company's architect and/or the relevant approving authorities. The Developer is wholly exempt from any liability on account of any claim in this regard. (1 square metre = 10.764 square feet). E & OE. All dimensions and calculations are done in metric system (M/ Sq.m), and imperial system (Ft/ Sq.ft) shown is for reference only.

UNIT TYPE: 3 BEDROOM



UNIT 1 & 2



SUPER BUILT UP AREA OF UNIT	169.11 sq.mt	1820 sq.ft
CARPET AREA	104.85 sq.mt	1129 sq.ft
BALCONY AREA	10.06 sq.mt	108 sq.ft

The information depicted in this booklet viz., master plans, floor plans, furniture layout, fittings, illustrations, specifications, designs, dimensions, rendered views, colours, amenities and facilities etc., are subject to change without notifications as may be required by the relevant authorities or the developer's architect, and cannot form part of an offer or contract. Whilst every care is taken in providing this information, the Developer cannot be held liable for variations. All illustrations and pictures are artist's impression or stock images used for representative purpose only. The information is subject to variations, additions, deletions, substitutions and modifications as may be recommended by the company's architect and/or the relevant approving authorities. The Developer is wholly exempt from any liability on account of any claim in this regard. (1 square metre = 10.764 square feet). E & OE. All dimensions and calculations are done in metric system (M/ Sq.m), and imperial system (Ft/ Sq.ft) shown is for reference only.

UNIT TYPE: 3 BEDROOM



UNIT 3 & 4



SUPER BUILT UP AREA OF UNIT	179.75 sq.mt	1935 sq.ft
CARPET AREA	108.96 sq.mt	1173 sq.ft
BALCONY AREA	14.87 sq.mt	160 sq.ft

The information depicted in this booklet viz., master plans, floor plans, furniture layout, fittings, illustrations, specifications, designs, dimensions, rendered views, colours, amenities and facilities etc., are subject to change without notifications as may be required by the relevant authorities or the developer's architect, and cannot form part of an offer or contract. Whilst every care is taken in providing this information, the Developer cannot be held liable for variations. All illustrations and pictures are artist's impression or stock images used for representative purpose only. The information is subject to variations, additions, deletions and modifications as may be recommended by the company's architect and/or the relevant approving authorities. The Developer is wholly exempt from any liability on account of any claim in this regard. (1 square metre = 10.764 square feet). E & OE. All dimensions and calculations are done in metric system (M/ Sq.m), and imperial system (Ft/ Sq.ft) shown is for reference only.

UNIT TYPE: 3 BEDROOM



UNIT 5



UNIT 5

SUPER BUILT UP AREA OF UNIT	179.32 sq.mt	1930 sq.ft
CARPET AREA	108.54 sq.mt	1168 sq.ft
BALCONY AREA	14.87 sq.mt	160 sq.ft

The information depicted in this booklet viz., master plans, floor plans, furniture layout, fittings, illustrations, specifications, designs, dimensions, rendered views, colours, amenities and facilities etc., are subject to change without notifications as may be required by the relevant authorities or the developer's architect, and cannot form part of an offer or contract. Whilst every care is taken in providing this information, the Developer cannot be held liable for variations. All illustrations and pictures are artist's impression or stock images used for representative purpose only. The information is subject to variations, additions, deletions, substitutions and modifications as may be recommended by the company's architect and/or the relevant approving authorities. The Developer is wholly exempt from any liability on account of any claim in this regard. (1 square metre = 10.764 square feet). E & OE. All dimensions and calculations are done in metric system (M/ Sq.m), and imperial system (Ft/ Sq.ft) shown is for reference only.

UNIT TYPE: 3 BEDROOM



UNIT 6



UNIT 6

SUPER BUILT UP AREA OF UNIT	166.61 sq.mt	1793 sq.ft
CARPET AREA	104.17 sq.mt	1121 sq.ft
BALCONY AREA	10.41 sq.mt	112 sq.ft

The information depicted in this booklet viz., master plans, floor plans, furniture layout, fittings, illustrations, specifications, designs, dimensions, rendered views, colours, amenities and facilities etc., are subject to change without notifications as may be required by the relevant authorities or the developer's architect, and cannot form part of an offer or contract. Whilst every care is taken in providing this information, the Developer cannot be held liable for variations. All illustrations and pictures are artist's impression or stock images used for representative purpose only. The information is subject to variations, additions, deletions, substitutions and modifications as may be recommended by the company's architect and/or the relevant approving authorities. The Developer is wholly exempt from any liability on account of any claim in this regard. (1 square metre = 10.764 square feet). E & OE. All dimensions and calculations are done in metric system (M/ Sq.m), and imperial system (Ft/ Sq.ft) shown is for reference only.

Specifications

FLOORING

COMMON AREA

Waiting Lounge/Reception/

GF Lobby/Lift Lobby: Marble/Granite

Staircases: Granite/Vitrified tiles. Concrete tiles above first floor level.

Other Lift Lobby and Corridors (Upper

Floors): Vitrified tiles.

INTERNAL FLOORING

Living/Dining/Family/Foyer: Engineered marble

Bedroom 1: Engineered wooden flooring

Other Bedrooms: Engineered marble

Balcony/Deck: Wooden look, matte finish vitrified tiles.

KITCHEN

• **Counter:** Provision for modular kitchen

• **Plumbing/Electrical:** Provision for water purifier point, washing machine point and dish washer point, instant geyser point. Provision for single bowl sink in kitchen area. Sink with drain board will be provided in utility area.

TOILETS

CP Fittings: Grohe/Kohler/Bathline or equivalent.

Sanitary Fixtures: Duravit/Kohler/Roca/ American standard or equivalent.

Shower

- Shower with multi-mode option.
- Glass partition with door in toilet 1

Countertop Wash Basin and Wall Mounted EWC: Duravit/ Kohler/Roca/American standard or equivalent.

DOORS

Main Entry Door to Unit: Teakwood frame with designer shutter.

Bedroom Doors: Pre-engineered frames, pre-engineered shutters with lacquer finish.

Toilet Door: Pre-engineered frames, pre-engineered shutters with PU lacquer finish.

Utility: UPVC/anodized aluminium door cum window.

Balcony Door: UPVC/anodized aluminium doors with bug mesh.

WINDOWS

UPVC/anodised aluminium with glazing and bug mesh.

PAINTING & FINISHES

• **Exterior Finish:** External texture paint/ scratch coat with exterior emulsion.

• **Internal Walls:** Acrylic emulsion paint.

Common Area: Acrylic emulsion paint/scratch coat.

AIR CONDITIONING

Living and Bedrooms: VRV unit, ductable.

Units: 3BHK Units - 4kW • Penthouse - 5kW

SECURITY SYSTEM & AUTOMATIONS

• CCTV for common areas.

• Video door phone.

• Gas leak detector.

• Provision for home automation like curtain management, fan control, light dimmer.

The information depicted in this booklet viz., master plans, floor plans, furniture layout, fittings, illustrations, specifications, designs, dimensions, rendered views, colours, amenities and facilities etc., are subject to change without notifications as may be required by the relevant authorities or the developer's architect, and cannot form part of an offer or contract. Whilst every care is taken in providing this information, the Developer cannot be held liable for variations. All illustrations and pictures are artist's impression or stock images used for representative purpose only. The information is subject to variations, additions, deletions, substitutions and modifications as may be recommended by the company's architect and/or the relevant approving authorities. The Developer is wholly exempt from any liability on account of any claim in this regard. (1 square metre = 10.764 square feet). E & OE. All dimensions and calculations are done in metric system (M/ Sq.m), and imperial system (Ft/ Sq.ft) shown is for reference only.



Odes to the trust we built

Brigade Group received the Best Developer of the Year Award at the **Times Business Awards 2019**

Brigade was recognised as the Best Place to Work in the real estate category for the 9th year in a row by **Great Place to Work Institute**

Brigade Cornerstone Utopia won the Integrated Township Project of the Year Award at the **11th Realty Plus Awards 2019 - South**

Brigade Panorama won the award for Excellence in Delivery at the **11th Realty Plus Awards 2019 – South**

Brigade Orchards won the 'Smart Township Project of The Year' Award at the **6th Annual Silicon India Bengaluru Real Estate Awards 2018**

Brigade Exotica won the National award for Luxury Apartment Project of the Year at the **NDTV Property Awards 2015**



BRIGADE

Building Positive Experiences

To UPGRADE TO BRIGADE, call 1800 102 9977 • www.BrigadeResidencesWTC.com

Site Marketing Office:

No: 5/142,
Rajiv Gandhi Salai
(Old Mahabalipuram Road),
Perungudi, Chennai – 600096

Corporate Office:

29th & 30th Floor, WTC Bengaluru
at Brigade Gateway Campus,
Dr. Rajkumar Road, Malleswaram-
Rajajinagar, Bengaluru - 560055

Dubai:

Brigade Enterprises Ltd.,
708, Atrium Centre, Bank Street, Bur Dubai
Ph: +971 4 3555504
dubaisales@brigadegroup.com

Offices also at: BENGALURU • KOCHI • HYDERABAD • MYSURU

In humble
commemoration



Founders



Awarded
9 years in a row

